

BATON ROUGE

Charter Yacht Brochure



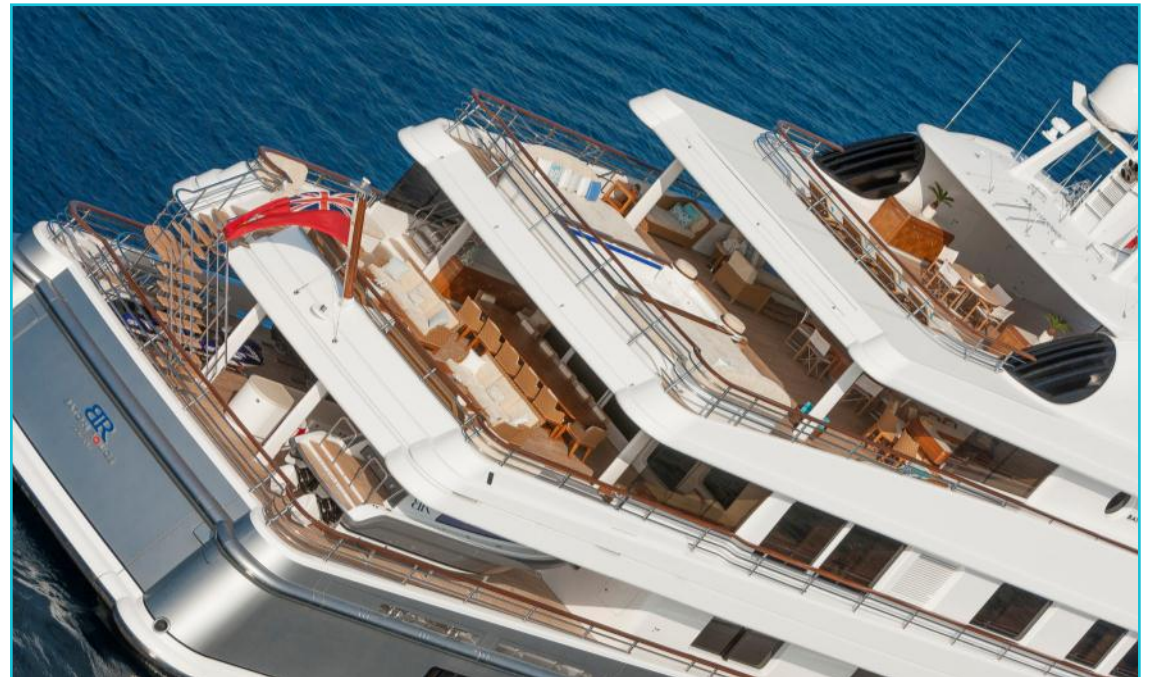
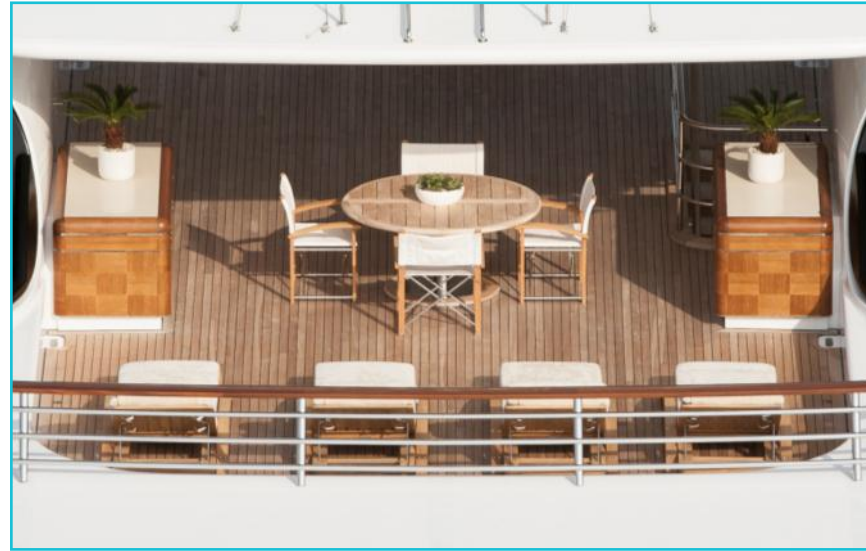
Decks







Deck Views



Beach Club





Main Saloon



Main Deck Dining



Sky Lounge



Observation Lounge



Master Suite



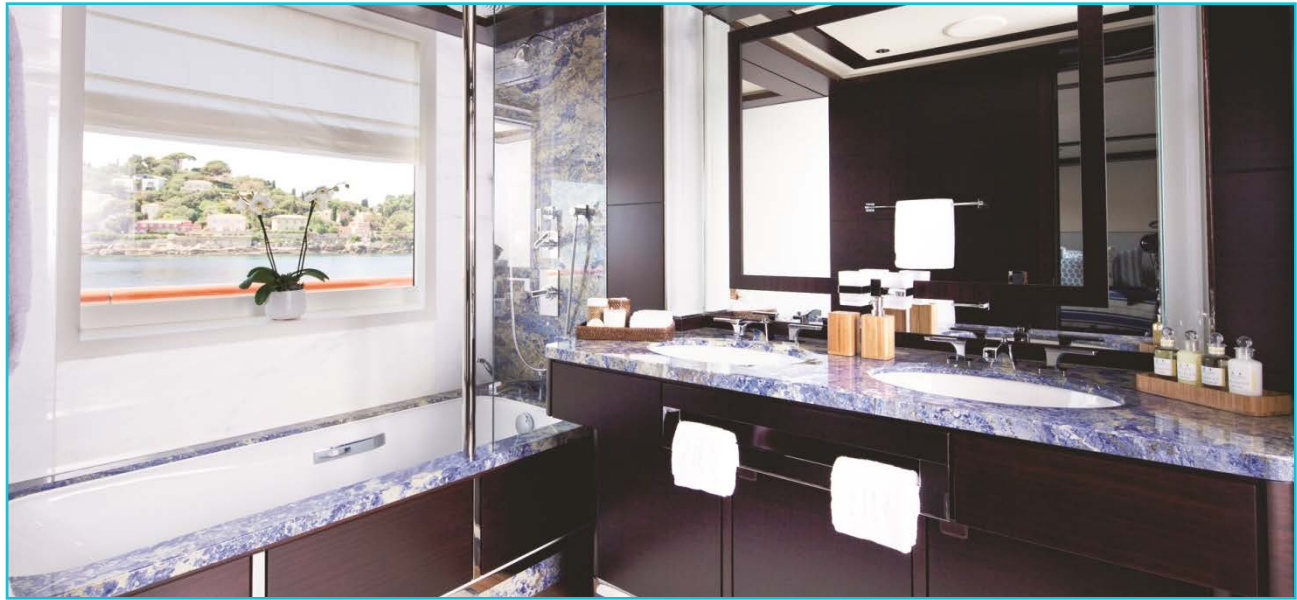
Master Bathroom & Office





Upper Deck VIP Cabins



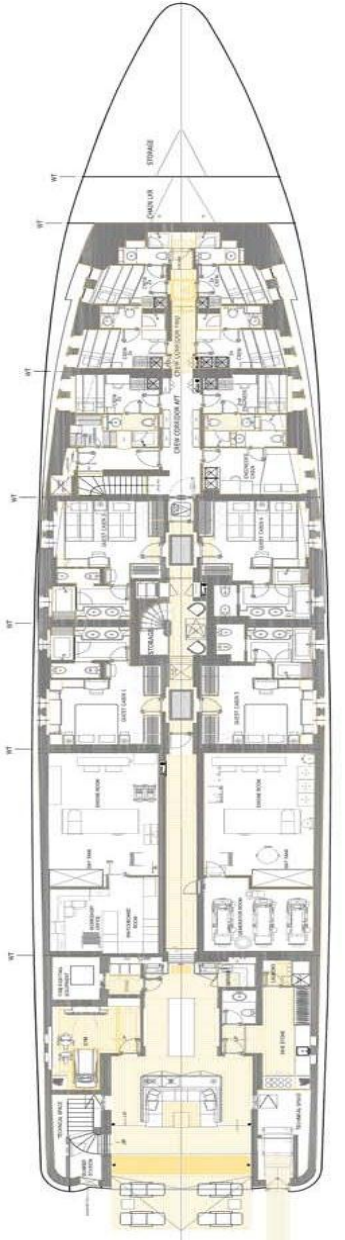
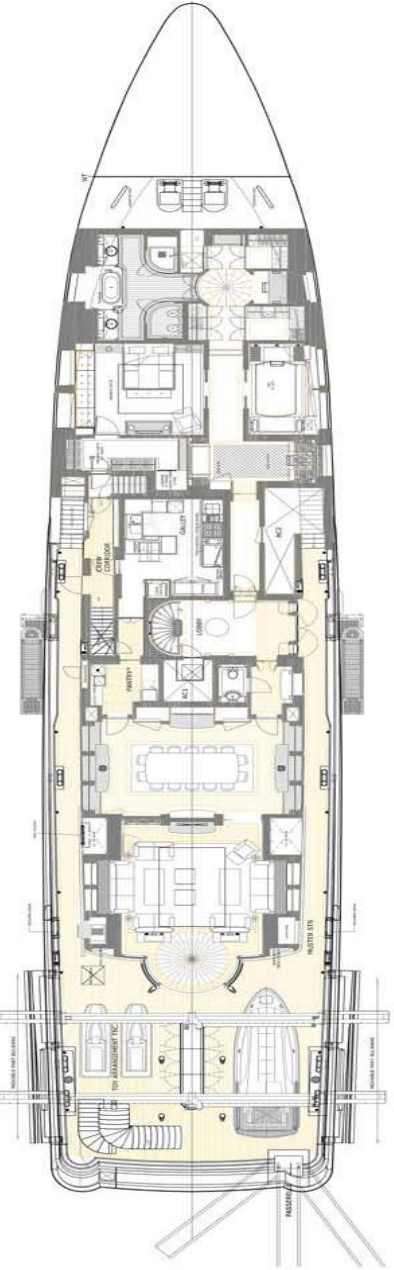
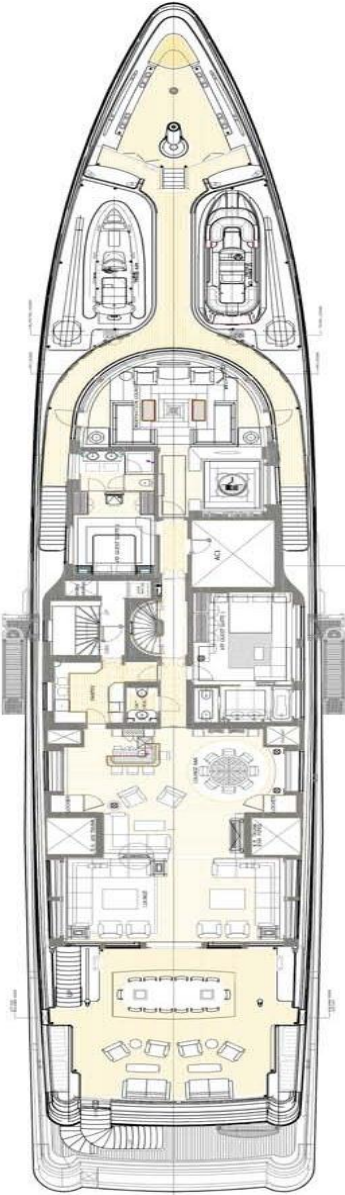
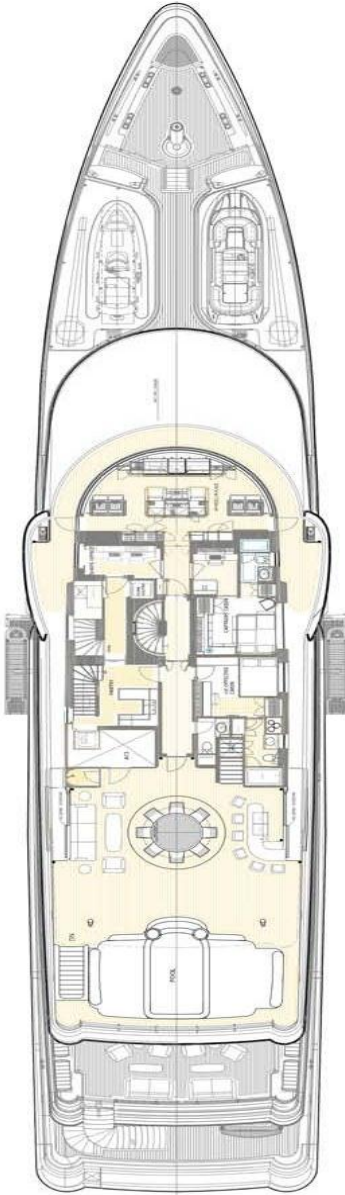
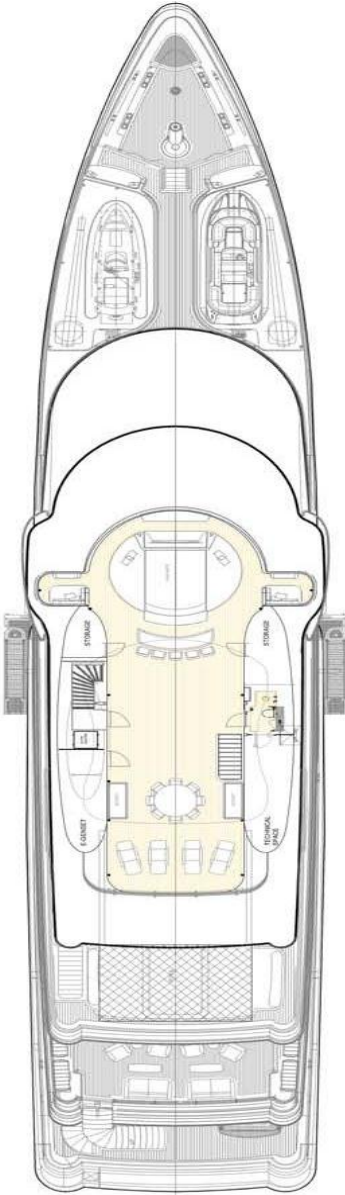


Lower Deck Guest Cabins





Deck Plans



BATON ROUGE

Charter Yacht Specifications

Length

62.5m (205ft)

Build

Icon Yachts, 2010

Interior Designer

Redman Whiteley Dixon

Cruising Speed / Fuel Consumption

About 14.5 knots / 750 litres per hour

Crew

18

Guests & Accommodation

Up to 12 guests in 7 cabins:

A master suite on the main deck

x VIP cabins on the upper deck

4 x double cabins on the lower deck, 2 of which convert to twins

2

All details in this document are given in good faith but can not be guaranteed.

Watersports & Recreation

8m Yachtwerft Meyer Limo tender with 2 x 348hp engines

7.3m Castoldi tender with 315hp engine

2 x PWC Sea-Doo GTX 260 Limited iS waverunners (3 man)

1 x PWC Sea-Doo SPARK waverunner (2 man)

2 x Seabobs

2 x Segways

Waterskis, wakeboard & towable toys

2 x windsurfers

2 x kitesurfs

Diving equipment (rendez-vous diving only) & snorkelling gear

Communications & Entertainment

Kaleidescape entertainment system providing on-demand music and movies

SKY satellite television channels and iPod docking stations throughout

Electric piano in the upper salon

The sun deck converts into a 'party deck' with full sound system

Satcom and cellular communication facilities

V-SAT WiFi internet throughout

Special Features

An RYA recognised water sports training centre for the use of waverunners Zero-speed stabilisation to dampen any rocking or rolling while at anchor Beach Club on the lower deck at sea level

