

S/V DOUCE FRANCE



Alumarine: 42.2m/138ft, 1998, 6 staterooms





























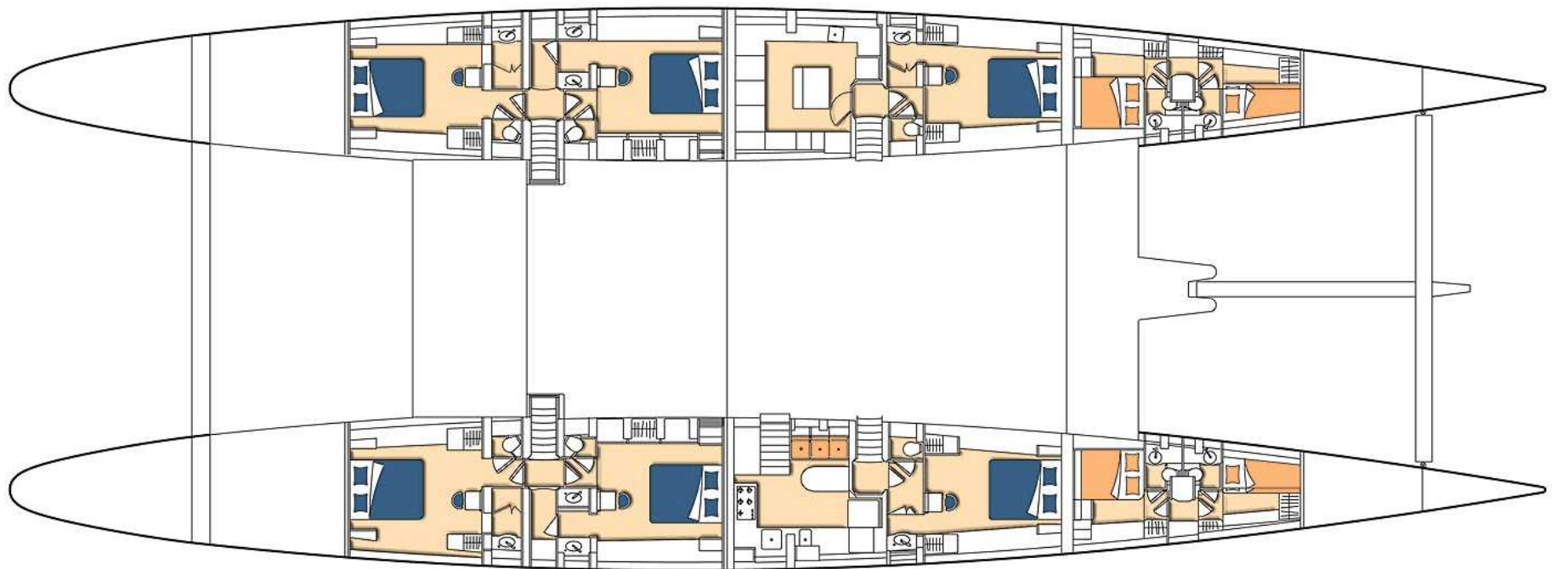
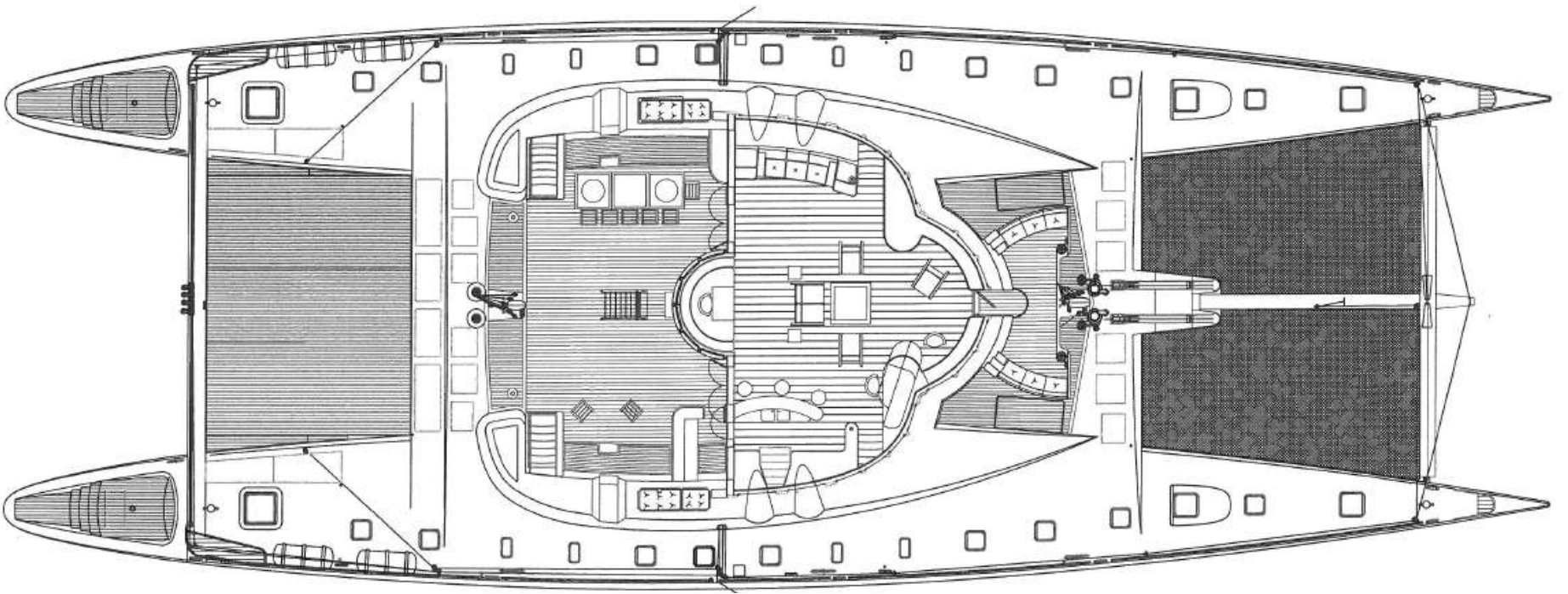












SPECIFICATIONS

Length: 42.20m (138' 5")

Beam: 15.40m (50' 6")

Draft: 2.50m (8' 2")

Year Built: 1998 (Refit 2009)

Builder: Alumarine

Flag: Belgium

Port of Registry: Belgium

Max Speed: 19 knots

Cruising Speed: 9 knots (engines only)

ACCOMMODATION

Number of Cabins: 6

(All are convertible between 1 x Queen double or 2 x single beds)

Total Guests (Sleeping): 12

Total Guests (Cruising): 12

Accommodation is offered for up to 12 guests in 6 stylish air-conditioned staterooms. Each of these staterooms is lined with pale sycamore wood and offers the option of either a queen-double or twin bed arrangements. At 50 sq ft in size, this also leaves ample room for a convertible desk / dressing table. All have spacious en-suite showers and separate heads facilities.

TENDERS, TOYS & FACILITIES

6.5m Zeplin w/ 115hp

4.2m crew tender w/ 40hp

2 Laser Sailing Dinghies

Windsurfer

Wakeboard

Sea Kayaks

Snorkeling equipment

Fishing equipment

2 x donuts (single and double)

Water-skis (adults, mono ski, children's skis)

Scuba diving equipment, wet suits, w/

Divemaster as permanent member of crew

BBQ

Ipod docks in each room

Flatscreen TVs and DVD players

Speakers for cabin and cockpit

Xbox 360

Bimini for shade